



## Chiswick Road, London, W4 5RE

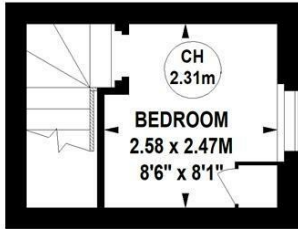
A unique mews type two-bedroom property with the added benefit of a patio garden and off-street parking, ideally located in this central Chiswick Location. The accommodation comprises a master bedroom, second bedroom/study, 15' reception room with French windows onto a courtyard garden, a fully fitted kitchen, and a cloakroom. The downstairs area has built-in underfloor heating. Ideally situated within close proximity of Chiswick Park (tube) Station, local bus routes and the extensive range of shops, bars and restaurants on Chiswick High Road. Hounslow Council Band B. EPC-C. The property is offered as unfurnished and available 1st July

- Two bedroom mews property
- Courtyard garden
- Off-street parking
- Central location
- Underfloor heating downstairs
- Available 1st July

**£2,250 Per Calendar Month**

# Chiswick Road, W4

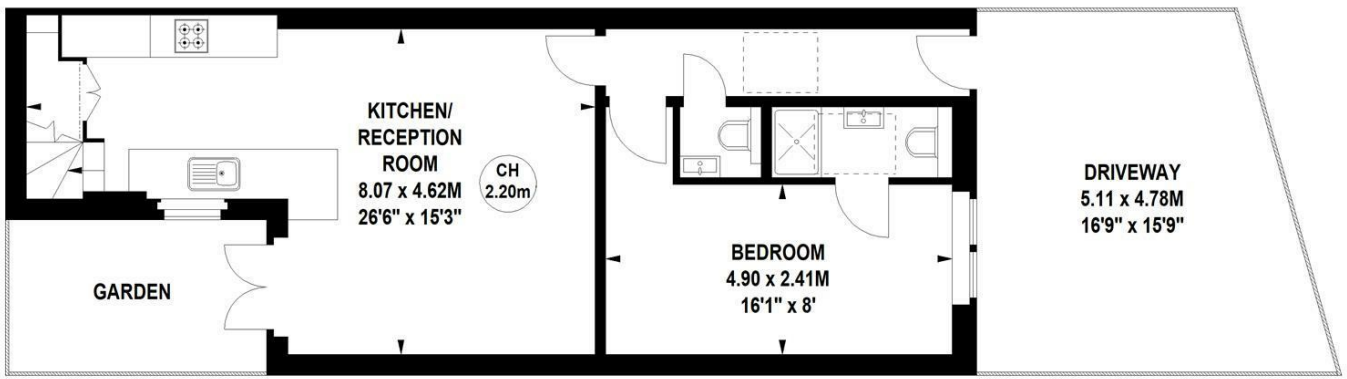
Approximate gross internal area  
62.71 sq m / 675 sq ft



First Floor



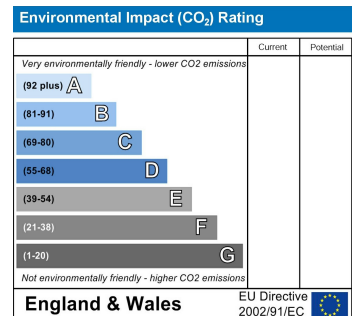
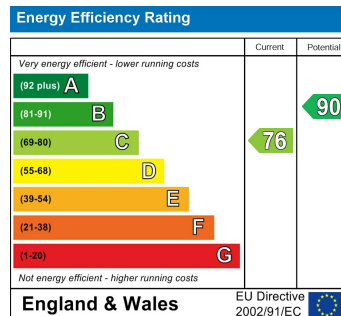
Key :  
CH - Ceiling Height



Ground Floor

Not to scale, for guidance only and must not be relied upon as a statement of fact.  
All measurements and areas are approximate only

Local authority - Hounslow  
Council tax - Band B



5-7 Turnham Green Terrace, Chiswick, London, W4 1RG  
Tel 020 8747 8800

E-mail [lettings@whitmanandco.com](mailto:lettings@whitmanandco.com)  
Website [www.whitmanandco.com](http://www.whitmanandco.com)